

CERIDIAN

Release Notes

Powerpay

Release 6.14

November 2, 2022

Publication Record

Software Version	Publication Date	Description
6.14	11/02/2022	Original publication date

These Release Notes describe the enhancements and fixed defects that have been incorporated into the latest release of Powerpay.

The document is organized in chapters in the following sections if they apply:

- New Functionality section, which describes the features and functions that were added.
- Enhancements, which describes the enhanced features.

For questions, please contact your Ceridian representative.

Ceridian provides the information in Release Notes to customers for general information purposes only. This information should not be construed as legal, tax or other advice specific to any individual or organization. Please consult your appropriate adviser for such specific advice.

© 2022 Ceridian HCM, Inc. All rights reserved. Ceridian is a registered trademark of Ceridian HCM, Inc. Product names mentioned herein may be trademarks and/or registered trademarks of other companies.

Summary

Welcome to the 6.14 release of Powerpay.

Some of the key enhancements that are delivered in this Powerpay release include:

- **Delete Custom Entitlement**– Custom Entitlements that were created in error or are no longer required can now be deleted in Powerpay.

Contents

- Summary3**
- New Functionality5**
 - Delete Custom Entitlement5
- Enhancements6**
 - Multifactor Authentication.....6
 - Support for VOIP Numbers6
 - Days to Remember6
 - Self Service Username6
 - Direct Deposit Additional Deposit Imports for Powerpay People Payrolls6
 - Payroll Preview - Net/Gross Pay Warning Messages7
 - Rapid Entry Page Updates7
 - Direct Deposit Page8
 - Powerpay Hybrid Customers – Submit Payroll.....8

New Functionality

Delete Custom Entitlement

Custom Entitlements that were created in error or are no longer required can now be deleted in Powerpay.

Note: Custom Entitlements used for any unprocessed time off requests cannot be deleted. To delete the entitlement, you must first:

- Delete any pending requests using this entitlement.
- Cancel any approved request using this entitlement that have not been paid.

Note: Once a custom entitlement is deleted, it is no longer included on the following:

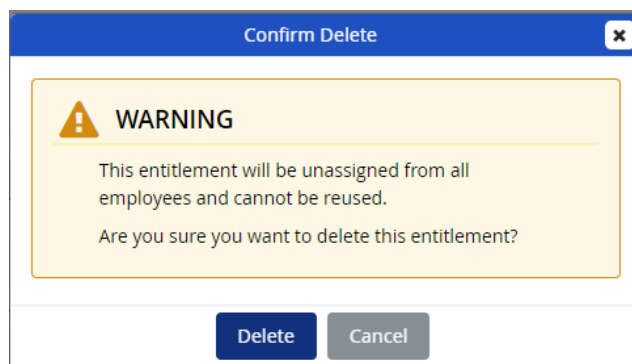
- Time Off Request tab (**People > Settings > Time Off Request**)
- Current Entitlement Balances Report (**People > Reports > Current Entitlement Balances**)
- New Hire or Onboarding Wizard
- Time Off tab (**People > People List > Time Off**) in the Time Off Entitlements section, the Assign Additional Entitlements pop-up or the Entitlement Balance History section.
- Reason List for a new time off request

To delete a custom entitlement:

1. Go to the Time Off Request tab in Powerpay (**People > Settings > Time Off Request**).
2. Click the Trash Can icon in the Action column for the custom entitlement to delete.



3. A warning message displays. Click **Delete**.



The custom entitlement is deleted and removed from any employees to which it was assigned.

Enhancements

Multifactor Authentication

Support for VOIP Numbers

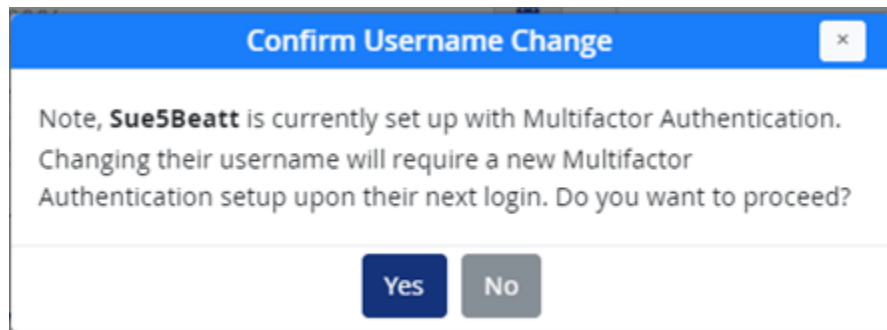
VOIP numbers can now be used for Multifactor Authentication.

Days to Remember

An audit record is now generated when the Days to Remember field on the User & Contact management page (**Company > User & Contact Management**) is successfully updated.

Self Service Username

If a Self Service Username is updated for an employee set up with multifactor authentication, a warning message now displays as a reminder that the user will be required to complete a new multifactor authentication set up upon their next login.



Direct Deposit Additional Deposit Imports for Powerpay People Payrolls

Direct Deposit Additional Deposit imports are now available for Powerpay People payrolls.

Note: The following are not currently supported:

- Employee Profile and Direct Deposit import on Powerpay People payrolls with Onboarding enabled
- Custom Entitlement balance import
- Direct Deposit Override Value

For information about payroll import see [Payroll Import](#).

See [Custom Import Setup](#) for information on creating an import template.

See [Import a custom payroll file into Powerpay](#) for information on how to perform custom imports and [Import a payroll file into Powerpay](#) for information on how to perform manual imports and correcting import errors and warning.

Payroll Preview - Net/Gross Pay Warning Messages

Powerpay displays a warnings message in the Payroll Preview if an employee’s salary exceeds the gross or net pay warnings set for your payroll. The warning message has been updated to clarify that payment will still process when the payroll is submitted, subject to EFT limits.

Gross Pay Warning:

“The following employees have a gross pay amount that exceeds your payroll control warning amount of \$XXX. Payroll Control limits are only a warning and the payment will still process subject to EFT limits. If you would like to modify the warning amount for your company maximum gross pay amount, please contact your Service Delivery Team before submitting your payroll.”

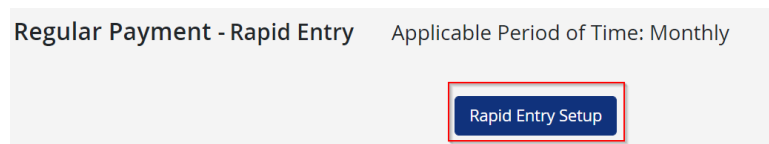
Net Pay Warning:

“The following employees have a net pay amount that exceeds your payroll control warning amount of \$XXX. Payroll Control limits are only a warning and the payment will still process subject to EFT limits. If you would like to modify the warning amount for your company maximum net payment amount, please contact your Service Delivery Team before submitting your payroll.”

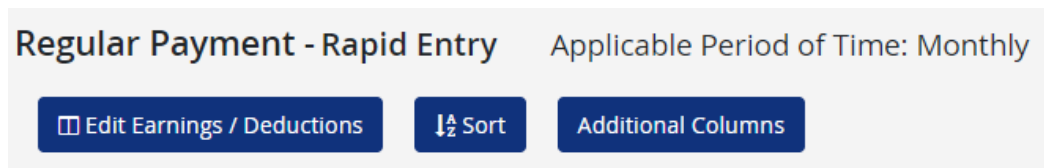
Rapid Entry Page Updates

For ease of use, the following updates are now available on the Rapid Entry pages:

- The link to configure Rapid Entry has been replaced by a button.



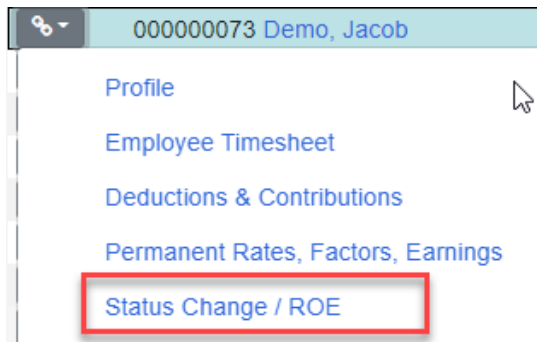
- The Rapid Entry Setup links have been replaced by buttons.



- The headers for Hours, Earnings, Deductions and Contributions on the Rapid Entry grid have been updated to have the symbol display next to the payroll element.



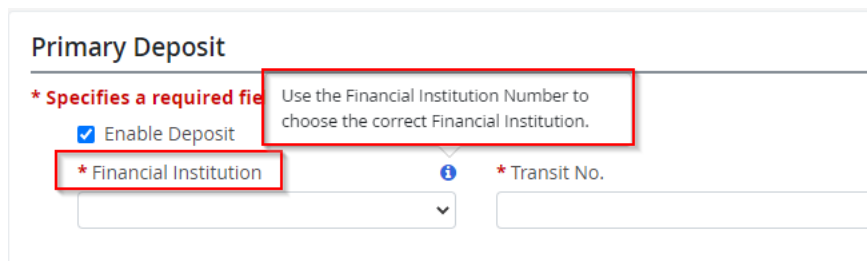
- A Status Change/ROE link has been added to the quick link menu.



Direct Deposit Page

To improve usability:

- The label on the “Name of Financial Institution” field on the Direct Deposit page has been updated to the “Financial Institution”.
- The information icon message has been updated to “Use the Financial Institution Number to choose the correct Financial Institution.”



Note: The information icon only displays when creating or editing a deposit.

Powerpay Hybrid Customers – Submit Payroll

Powerpay Hybrid customers can now submit Regular payroll runs in Powerpay.